

# Stribling Road Improvements

Madison County, Mississippi



PROJECT MANAGER  
**Shannon Wells, PE, PS**

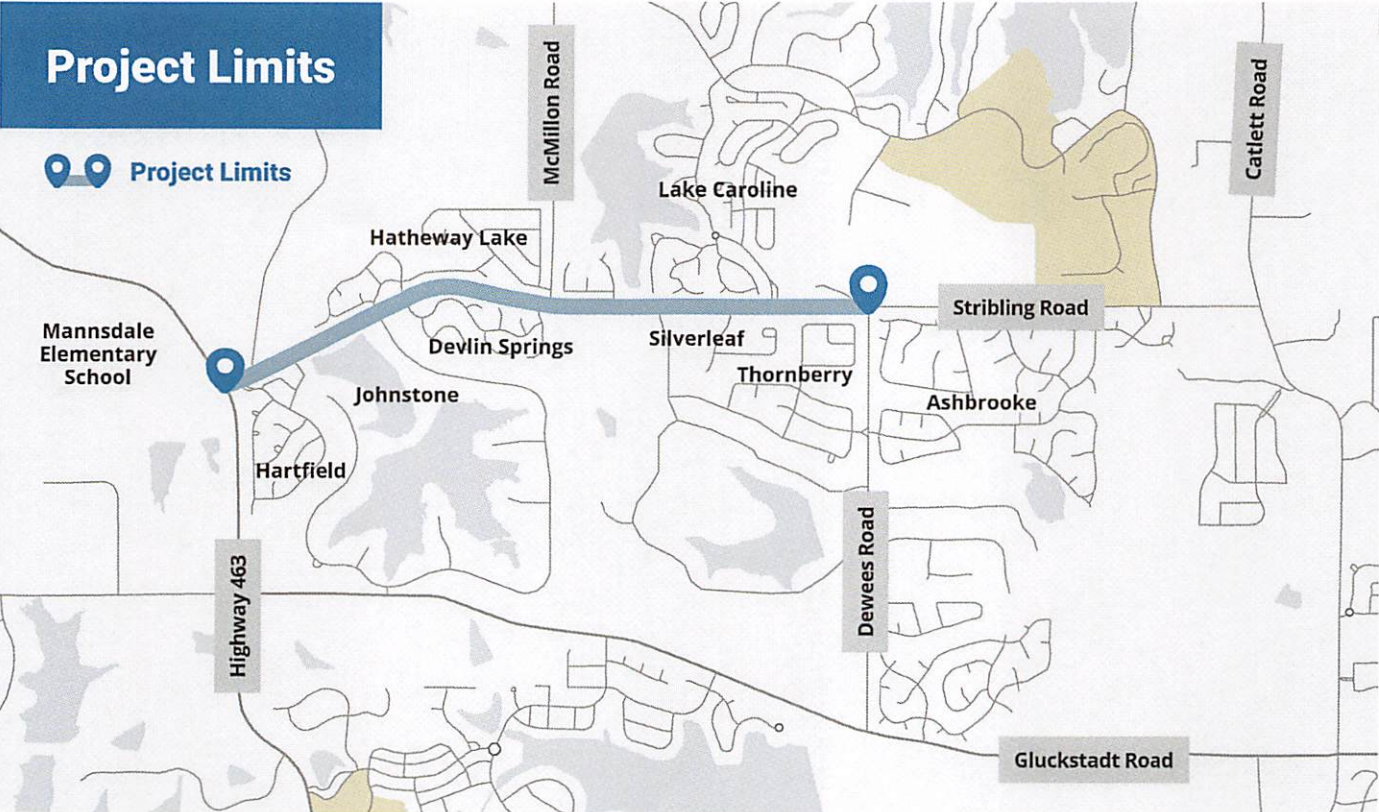
1076 Highland Colony Parkway  
Suite 325  
Ridgeland, MS 39157  
601-941-3252  
MSWells@GarverUSA.com

Madison County



**Project Description**  
Stribling Road Improvements from  
Highway 463 to Dewees Road

## Project Limits

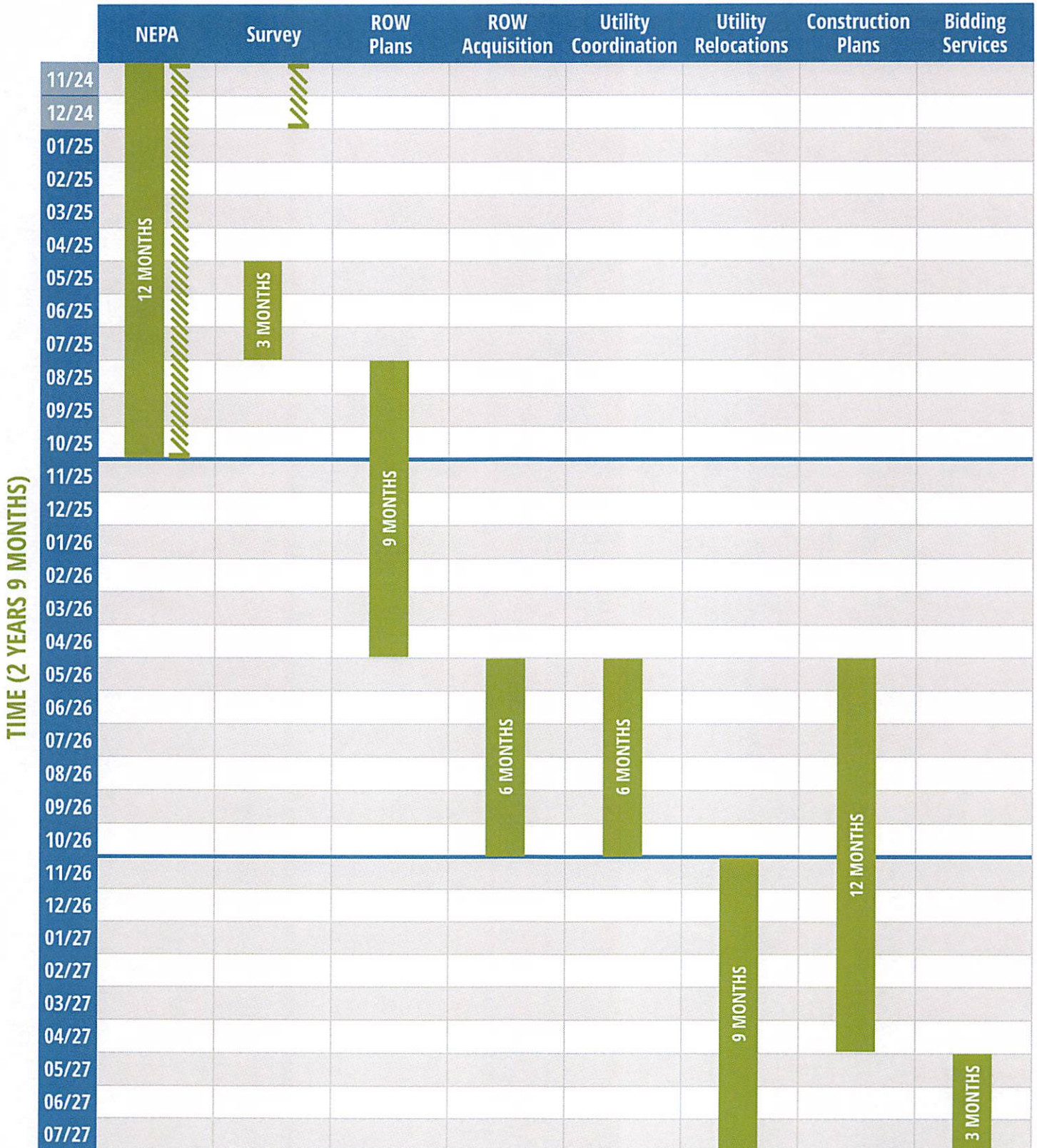


# Project Design Schedule

## Legend

- Preliminary Schedule
- Updated Schedule (January 21, 2025)

### PHASE/TASK



# Stribling Road Improvements

January 21, 2025 Update



## Progress to Date

- **Survey:** Topographic design survey completed
- **Environmental**
  - Wetland delineation completed and began development of the report
  - A Nationwide permit will be required (not an individual permit)
  - USFWS has determined no threatened or endangered species are within the project limits.
  - MDAH responded that a Cultural Resources survey will be required.
- **Utilities:** All utility companies listed on the locate request have been contacted. Various timeframes for design/relocation were given, ranging from 6 to 18 months. These are based on complete relocation, which is the worst-case scenario.
- **Traffic Study:** Traffic counts have been collected, and we began determining future volumes needed to develop the traffic model.
- **Roadway:** Began developing conceptual roadway alignment based on information collected to date.
- **Geotechnical:** Began field work
- **ROW:** Potentially, as many as 100 lots could be affected; however, as design develops it is expected that 65 to 70 parcels is more realistic. The acquisition process is estimated to take approximately 12-18 months.

**Stribling Road (Highway 463 to Dewees Road)**

**Contract Value:** \$803,000

**Contract NTP:** November 4, 2024

**Amount Invoiced to Date:** \$68,065.70

## Anticipated 3-Month Projection of Work

- **Environmental**
  - **Wetlands**
    - Complete the wetlands report and submit to USACE
    - Receive preliminary jurisdictional determination from USACE
    - Begin developing the wetland permit
  - **Cultural:** Complete field work and begin developing the report to submit to MDAH
- **Utilities:** Add locations on design drawings based on as-built plans and GIS information. Continue to coordinate closely with utility companies as roadway design progresses and utility impacts are more accurately defined
- **Traffic Study:** Complete the traffic analysis, which will include recommendations for lane configurations
- **Geotechnical:** Complete the field work and begin development of report
- **Roadway:** Progress preliminary roadway design to the level of detail necessary to complete the environmental permitting process